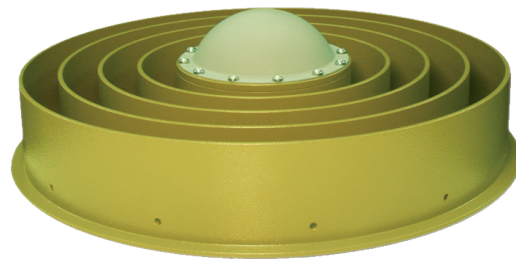




GNSS ANTENNA

RingAnt-DM



Reference Station antenna with choke ring RingAnt-DM is the standard Dorne-Margolin antenna element mounted on standard JPL Choke Ring. RingAnt-DM can track GPS, GLONASS, GALILEO, BEIDOU, WAAS, EGNOS, MSAS, GAGAN and QZSS signals.

The RingAnt-DM antenna is designed for highly efficient multipath reduction and is recommended for use in GNSS reference networks, infrastructure monitoring, high precision geodetic surveying, or machine control applications.

RingAnt-DM

SIGNAL

Capability	GPS L1/L2/L5 GLONASS L1/L2/L3 GALILEO E1/E2/E5ab/E6 BEIDOU B1/B2/B3 WAAS L1/L5, EGNOS, MSAS, GAGAN QZSS L1/L2/L5/LEX
Frequency	1555~1610MHz 1164~1300 MHz

ELECTRICAL

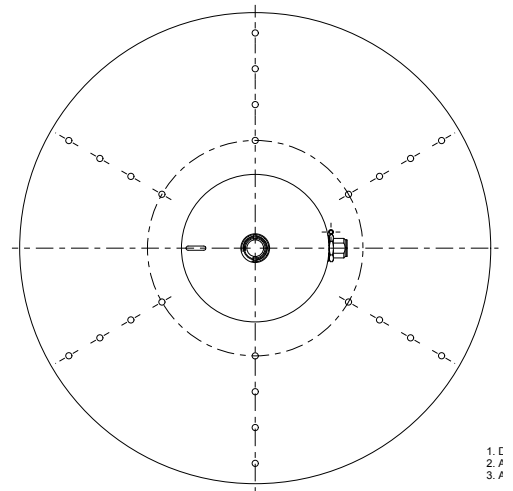
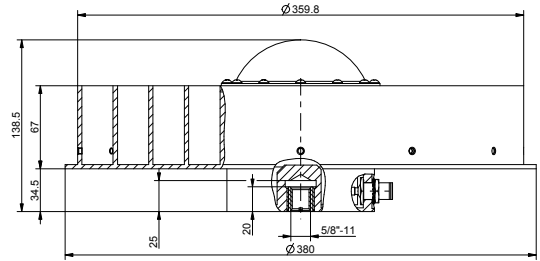
Antenna Gain	1555~1610MHz – 6.0 dB typ. 1164~1300 MHz – 5.0 dB typ.
Axial Ratio	3.0 dB max.
Output Impedance	50 Ohm
VSWR	2.0 : 1
LNA gain	32±2 dB
Noise Figure	1555~1610MHz – 2.2 dB typ. 1164~1300 MHz – 1.7 dB typ.
DC voltage	3.0~15.0VDC 45mA@5.0V typ.

ENVIRONMENTAL

Operating Temperature	-45°C ~ +85°C
Storage Temperature	-50°C ~ +85°C
Humidity	Waterproof

MECHANICAL

Antenna type	Omnidirectional, hemispherical
Connector	N-type
Weight	4.4 kg
Dimensions	Ø 380 mm; H=138 mm
Enclosure	Radome: Fiberglass Base: Aluminum
Mounting	5/8-11 inches mount



* All dimensions are in mm

Illustrations, descriptions and technical specifications are not binding and may change.

Version 1.6 from October 22, 2019



900 Rock Avenue
San Jose
CA 95131, USA

+1(408)770-1770
sales@javad.com
www.javad.com